



UNIVERGE® UM8000-Mail Solution

Fulfilling the promise of UNIVERGE®360

The UNIVERGE UM8000-Mail solution is an enhanced, in-skin unified messaging system that delivers abundant message storage, scalable port capacity and all the features you've come to expect from NEC, a leader in voice messaging products. This solution, which is designed specifically for SV8000 Series Communications Servers, perfectly exemplifies NEC's UNIVERGE360 approach to unifying business communications by integrating voice, fax and email messages into one inbox while offering legendary reliability with a smaller footprint and lower operating cost than other systems.

In-Skin Unified Messaging for the UNIVERGE® SV8000 Series

The UM8000-Mail solution offers organizations already utilizing the UNIVERGE SV8000 Series a number of remarkable features, such as:

- Storage of over 500 hours of messages
- Scalability from 2 to 16 ports
- Support for up to 1000 mailboxes
- Addition of up to 4 optional fax ports
- Use of the SV8000 Series system's battery backup during power failures
- Consumption of less space and power than other systems because it fits inside the SV8000 series chassis

At a Glance

- In-Skin Unified Messaging for the UNIVERGE® SV8000 Series
- User-configurable mailbox manager
- An optional feature package for the hospitality industry
- Fully integrated messaging

With feature-rich Unified Messaging, all voice, fax and e-mail messages are directed into one inbox. Users can keep track of all their messages and prioritize them more easily to better streamline their workloads.

Users can also use Unified Messaging to:

- Set up their mailboxes to meet their personal needs
- Play and record messages using their multimedia PCs
- Send and receive secure faxes. Inbound and outbound documents are password-protected and stored electronically until previewed and printed from a networked PC.

User-Configurable Mailbox Manager

A number of personal mailbox settings can be controlled and configured through the Mailbox Manager's graphical user interface (GUI). Some of the configurable settings include:

- Greetings
- Security codes
- Notifications
- Groups
- Conversation preferences

This GUI also provides users many message management options including:

- Listen
- Delete
- Archive
- Download selected messages to a PC as wav files

Optional Feature Package for the Hospitality Industry

UM8000-Mail offers an optional feature package specifically designed for the hospitality industry. It integrates with more than 50 property management systems (PMSs) through the Property Management System Interface (PMSI). This package includes:

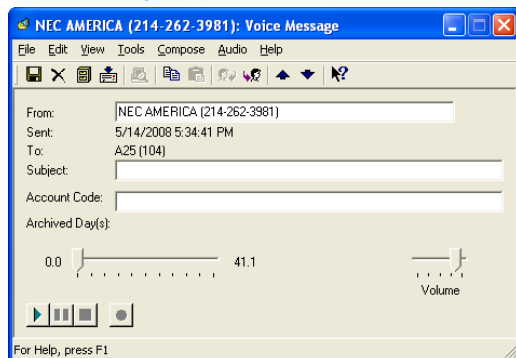
- Personalized guest messaging for every room
- Available system prompts for an extensive list of languages
- A guest directory that enables callers to contact hotel guests or to leave messages without going through an operator
- A wake-up feature that offers guests the ability to add, delete, change and confirm their own wake-up calls
- Simultaneous broadcasting of messages to the entire hotel staff
- The ability for employees to leave messages for other internal staff members
- Instant alerts for housekeeping, maintenance, and room service staff via pager or cellular telephone

The PMSI can seamlessly integrate with the UM8000-Mail to coordinate voicemail services. When the system receives a voice message for a specific guest, it illuminates the guest's message-waiting lamp. The system extinguishes the lamp when the guest retrieves his or her messages.. When the guest checks out, the system can delete all of the guest's messages from the system or save them for a preset number of days.

Fully Integrated Messaging

For simplified message management, UM8000-Mail offers convenient access to messages and customizable user-friendly settings. UM8000-Mail is the best low-cost, efficient integrated messaging solution for your organization.

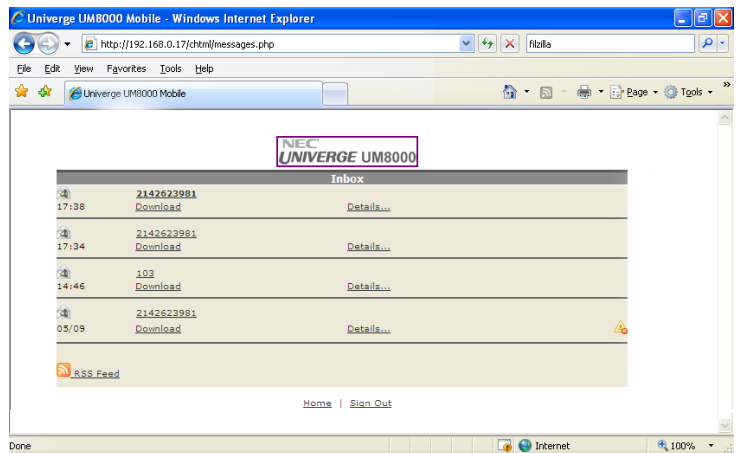
Unified Message Playback



UM8000-Mail Key Features

- Speed Keys
- Subscriber Controlled Groups
- Variable-Length Security Codes/Passwords
- Live Record, Message Cancel & Redirect
- Caller Interviewing
- Soft-Key Functionality & Trunk Mapping
- Remote Maintenance
- Date & Time Stamp
- Transfer to Attendant
- Urgent Message Count
- User-Changeable Voice Prompts & Single-Digit Dialing
- Fax Detect, Routing & Notification
- Subscriber Self-Enrollment
- Reports
- Out-Dial Notification to Pager
- Future, Urgent & Return Receipt Delivery
- Port Independence
- Cascade Notification
- Menu Options
- Cut-Through Paging & Message Editing
- Multilingual Capability & Multiple Personalized Greetings
- Extension Remapping
- Message Rewind, Pause & Fast Forward
- Alphanumeric Directory
- Supervised/Unsupervised Transfers
- Message Waiting Notification
- Guest Mailboxes & Call Screening
- Volume & Speed Control
- Holiday Schedules
- Call Accept or Reject

Web Mailbox Manager Inbox



Empowered by Innovation



For more information, visit www.necunified.com

Corporate Headquarters (Japan)
NEC Corporation
www.nec.com

Oceania (Australia)
NEC Australia Pty Ltd
www.nec.com.au

North America (USA)
NEC Unified Solutions, Inc
www.necunifiedsolutions.com

Asia
NEC Corporation
www.nec.com

Europe (EMEA)
NEC Philips Unified Solutions
www.nec-philips.com

About NEC Unified Solutions, Inc. NEC Unified Solutions helps companies unify their business through innovative software, applications, development tools, and services. NEC offers a complete portfolio for unified communications, wireless, voice, data and managed services, as well as systems integration and application development. NEC Unified Solutions, a wholly owned subsidiary of NEC Corporation of America, serves Fortune 1000, as well as small to mid-sized businesses across the globe in vertical markets such as hospitality, education, government and healthcare. For more information, visit www.necunified.com.

188585 | v.06.05.08

© 2008 NEC Corporation. All rights reserved. NEC, NEC logo, and UNIVERGE are trademarks or registered trademarks of NEC Corporation that may be registered in Japan and other jurisdictions. All trademarks identified with ® or ™ are registered trademarks or trademarks respectively. Models may vary for each country. Please refer to your local NEC representatives for further details.