



UNIVERGE® SV8000 Series PC Pro/WebPro

Fulfilling the promise of UNIVERGE®360

The UNIVERGE SV8000 Series PC Pro/WebPro is an instrumental troubleshooting tool that empowers users to manage their own terminals and provides them with the functionality needed to simplify communications. As part of NEC's UNIVERGE®360 approach, PC Pro/WebPro connects people with the information and tools needed to keep businesses running smoothly.

PC Pro/WebPro helps you manage your terminals simply and easily. Most PC Pro/WebPro programming is done via three views – Standard, Wizards and System Data. These views are accessible through menu items, a tabbed view or one-click icons.

At a Glance

- Program using Standard View, Wizards or System Data View
- Provides modification history reports
- Schedules SV8000 Series System updates automatically and remotely

Program Using Standard View, Wizards or System Data View

SV8000 Series PC Pro/WebPro provides you with multiple interface options including a Standard View, Wizards, and a System Data view.

- **Standard View** combines related settings on one screen, allowing quick setup of high-level tasks. Settings on these screens work together to provide users a better understanding of screen relationships. They are identified by names which clearly indicate their functions.
- **Wizards** can be used to simplify programming. PC Pro/WebPro wizards chronologically group System Data and guide users during feature setup. They are named according to their function.
- **System Data** screens are intended for advanced users of PC Pro/WebPro and are categorized by KTS settings.

Modification History

PC Pro keeps a record of all modifications made to a database file. This record is the file's Modification History. Users are able to easily view this file and can quickly see any changes that have been implemented.

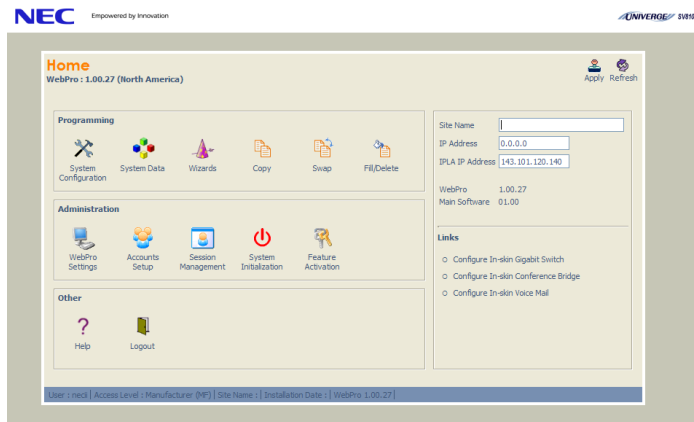
Automatic and Remote Functions

PC Pro/WebPro helps make the management process easier. Users can also schedule automatic updates to SV8000 Series firmware remotely, and settings between systems and PC Pro/WebPro can be remotely uploaded and downloaded.

Additional Features

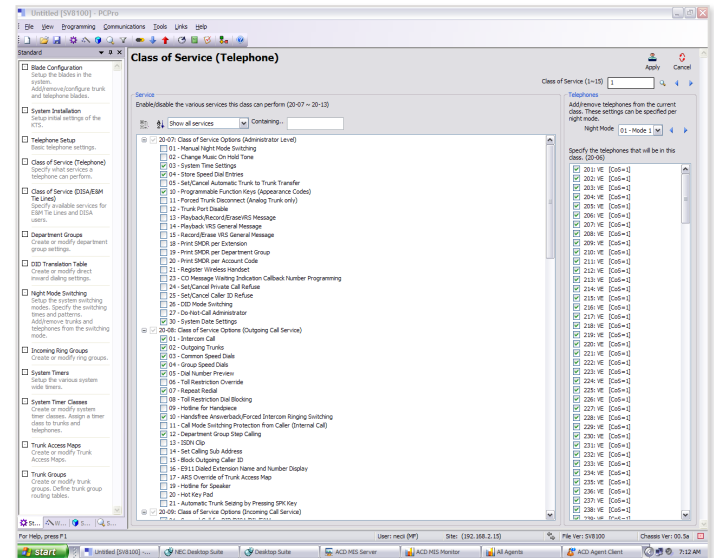
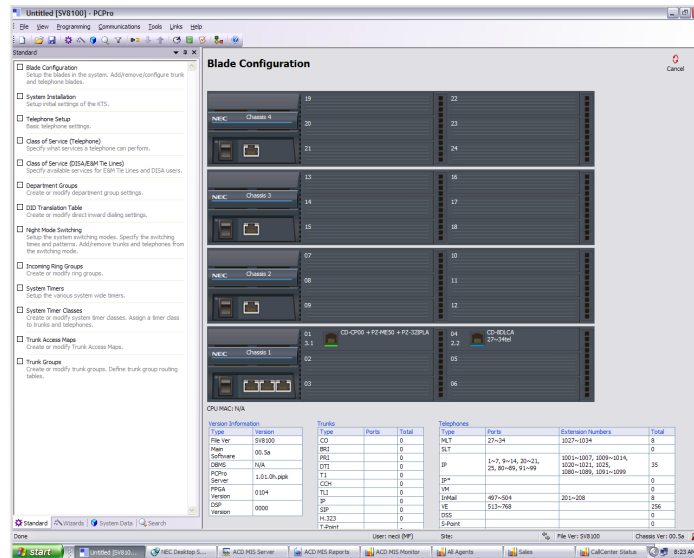
PC Pro also offers additional features. For example, users can:

- Capture low-level messages and problem-solve using the Debug Terminal
- Generate reports for monitoring settings
- Archive settings to specified files



System Requirements

CPU	Pentium III 598MHz (minimum) Pentium 4 2.5GHz (recommended)
Memory	128 MB of RAM 256 MB (recommended)
OS	Microsoft Windows 2000, Microsoft Windows XP, or Microsoft Vista
Other	Microsoft Internet Explorer 6.0 or higher
Communication Port	LAN or Modem
Disk Space	35MB for PCPro (minimum)
TCP Port	<ul style="list-style-type: none"> • TCP port 8000 must be open between the terminal and the host PC for uploading/downloading via LAN. • PCPro/WebPro TCP port is set for 8000 at default, but can be changed via WebPro using PRG 90-38-02. • PRG 90-38-02 is not accessible from Phone Programming or PCPro. • TCP port 5963 is required to be open if the Debug Terminal is going to be used.



Empowered by Innovation



For more information, visit www.necunified.com

Corporate Headquarters (Japan)
NEC Corporation
www.nec.com

Oceania (Australia)
NEC Australia Pty Ltd
www.nec.com.au

North America (USA)
NEC Unified Solutions, Inc
www.necunifiedsolutions.com

Asia
NEC Corporation
www.nec.com

Europe (EMEA)
NEC Philips Unified Solutions
www.nec-philips.com

About NEC Unified Solutions, Inc. NEC Unified Solutions helps companies unify their business through innovative software, applications, development tools, and services. NEC offers a complete portfolio for unified communications, wireless, voice, data and managed services, as well as systems integration and application development. NEC Unified Solutions, a wholly owned subsidiary of NEC Corporation of America, serves Fortune 1000, as well as small to mid-sized businesses across the globe in vertical markets such as hospitality, education, government and healthcare. For more information, visit www.necunified.com.

188584 | v.06.11.08

© 2008 NEC Corporation. All rights reserved. NEC, NEC logo, and UNIVERGE are trademarks or registered trademarks of NEC Corporation that may be registered in Japan and other jurisdictions. All trademarks identified with ® or ™ are registered trademarks or trademarks respectively. Models may vary for each country. Please refer to your local NEC representatives for further details.